

## Setting new standards!

The innovative FireAway™ Mica-Foldcore-Sandwich provides extreme protection against fire and heat in combination with excellent weight-specific mechanical performance.

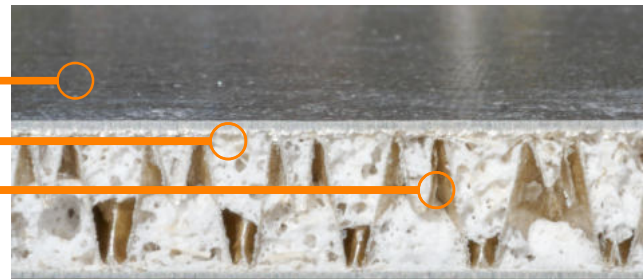
FireAway™ lightweight sandwich sheets consist of a fireproof Foldcore® and Cogebi 505 Mica facesheets joined by an insulating inorganic geopolymer foam. FireAway™ meets all common fire protection standards easily due to its inorganic composition and emits no toxic gases or smoke during exposure.

FireAway is non-flammable according to IMO MSC.307(88)-2010 FTP (Part 1) and offers comparable protection to steel constructions at lower weight, higher specific mechanical performance and superior thermal insulation.

Cogebi 505 Mica facesheets

Geopolymer foam adhesive

High-performance Foldcore



## Technical Data

Height	12.5 mm
Face sheet thickness	0.7 mm
Area weight	5.6 kg/m <sup>2</sup>
Density	450 kg/m <sup>3</sup>
Compressive Strength	1.5 MPa
Thermal Conductivity	0.1 W/(m K)
Heat resistance up to	1000 °C



*FireAway sandwich testing: No degradation after 2 hours in 950°C gas flame.*

## Additional Information:

- Available thicknesses: 10-25mm
- Available dimensions: up to 2.4 x 1 (m\*m)
- Also available with steel or aluminum facesheets
- Transparent to radio waves (e.g. WiFi) with Cogebi Mica 505 facesheets
- Integral fire-resistant coloring and texturing available on request
- FireAway can be processed with standard cutting and milling tools
- Custom variations available on request (please contact [klett@foldcore.com](mailto:klett@foldcore.com))